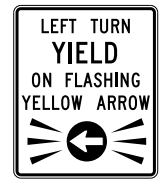
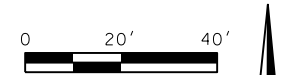


REVISIONS		
NO.	DESCRIPTION	DATE
1	REV. SIGNAL DESIGN	03-15-16
2	RELOCATED CONDUIT & PULL BOX	11-15-16



R10-12M (OKC STD.)  
30"x36"

LEGEND. SYMBOL & BORDER - BLACK NON-REFLECTIVE  
ARROW - YELLOW REFLECTIVE  
BACKGROUND - WHITE REFLECTIVE

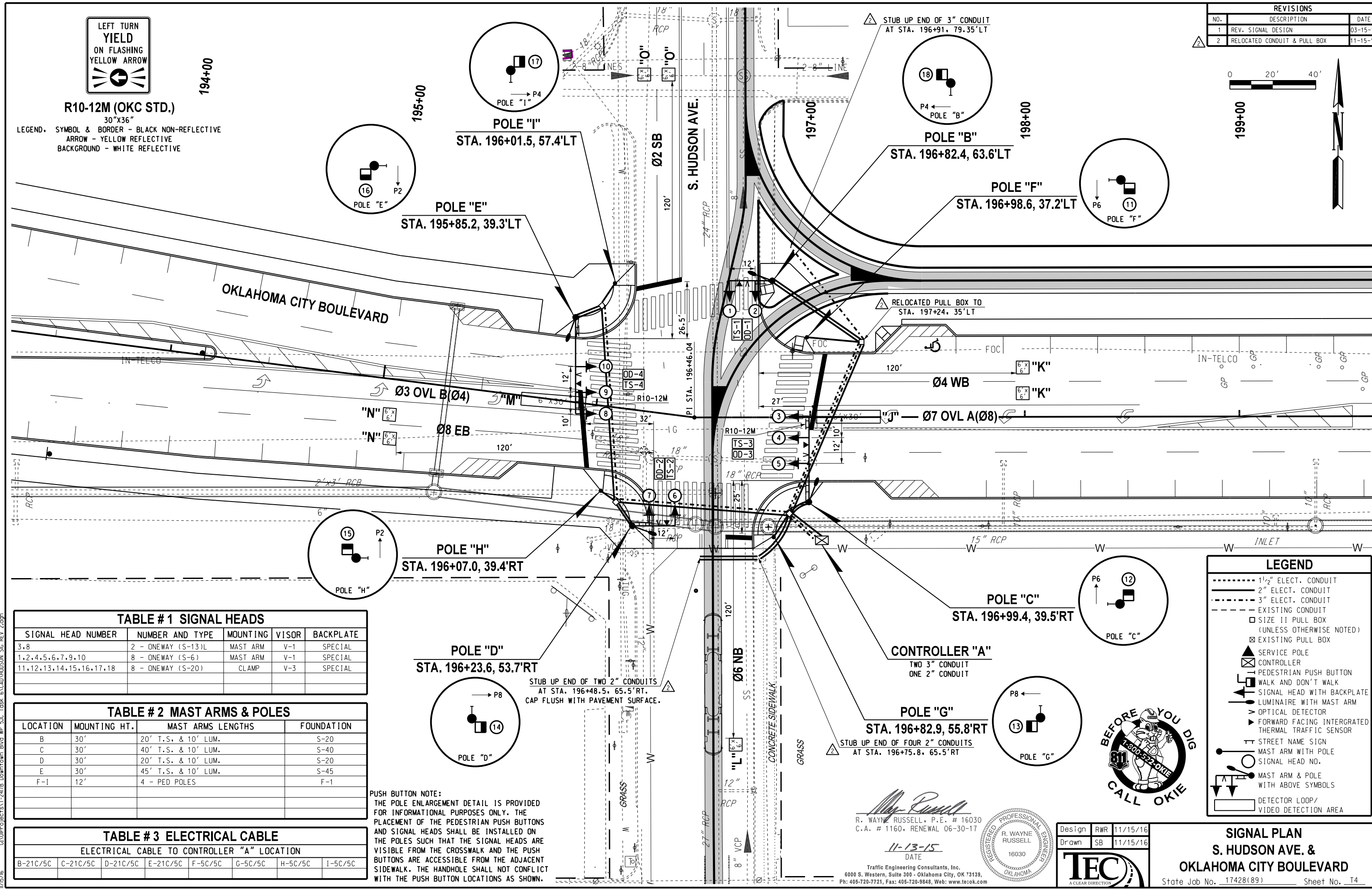


TABLE # 1 SIGNAL HEADS

SIGNAL HEAD NUMBER	NUMBER AND TYPE	MOUNTING	VISOR	BACKPLATE
3,8	2 - ONEWAY (S-13)L	MAST ARM	V-1	SPECIAL
1,2,4,5,6,7,9,10	8 - ONEWAY (S-6)	MAST ARM	V-1	SPECIAL
11,12,13,14,15,16,17,18	8 - ONEWAY (S-20)	CLAMP	V-3	SPECIAL

TABLE # 2 MAST ARMS & POLES

LOCATION	MOUNTING HT.	MAST ARMS LENGTHS	FOUNDATION
B	30'	20' T.S. & 10' LUM.	S-20
C	30'	40' T.S. & 10' LUM.	S-40
D	30'	20' T.S. & 10' LUM.	S-20
E	30'	45' T.S. & 10' LUM.	S-45
F-I	12'	4 - PED POLES	F-1

TABLE # 3 ELECTRICAL CABLE

ELECTRICAL CABLE TO CONTROLLER "A" LOCATION							
B-21C/5C	C-21C/5C	D-21C/5C	E-21C/5C	F-5C/5C	G-5C/5C	H-5C/5C	I-5C/5C

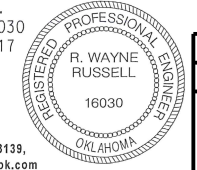
PUSH BUTTON NOTE:  
THE POLE ENLARGEMENT DETAIL IS PROVIDED FOR INFORMATIONAL PURPOSES ONLY. THE PLACEMENT OF THE PEDESTRIAN PUSH BUTTONS AND SIGNAL HEADS SHALL BE INSTALLED ON THE POLES SUCH THAT THE SIGNAL HEADS ARE VISIBLE FROM THE CROSSWALK AND THE PUSH BUTTONS ARE ACCESSIBLE FROM THE ADJACENT SIDEWALK. THE HANDHOLE SHALL NOT CONFLICT WITH THE PUSH BUTTON LOCATIONS AS SHOWN.

**LEGEND**

- 1/2" ELECT. CONDUIT
- 2" ELECT. CONDUIT
- 3" ELECT. CONDUIT
- EXISTING CONDUIT
- SIZE 11 PULL BOX (UNLESS OTHERWISE NOTED)
- EXISTING PULL BOX
- SERVICE POLE
- CONTROLLER
- PEDESTRIAN PUSH BUTTON
- WALK AND DON'T WALK
- SIGNAL HEAD WITH BACKPLATE
- LUMINAIRE WITH MAST ARM
- OPTICAL DETECTOR
- FORWARD FACING INTEGRATED THERMAL TRAFFIC SENSOR
- STREET NAME SIGN
- MAST ARM WITH POLE
- SIGNAL HEAD NO.
- MAST ARM & POLE WITH ABOVE SYMBOLS
- DETECTOR LOOP/VIDEO DETECTION AREA



R. WAYNE RUSSELL, P.E. # 16030  
C.A. # 1160, RENEWAL 06-30-17  
DATE 11-13-15  
Traffic Engineering Consultants, Inc.  
6000 S. Western, Suite 300 - Oklahoma City, OK 73139  
PH: 405-720-7721, Fax: 405-720-9848, Web: www.tecok.com



Design	RWR	11/15/16
Drawn	SB	11/15/16



**SIGNAL PLAN**  
**S. HUDSON AVE. & OKLAHOMA CITY BOULEVARD**  
State Job No. 17428(89) Sheet No. 14